

# New Mexico Climate Divisions

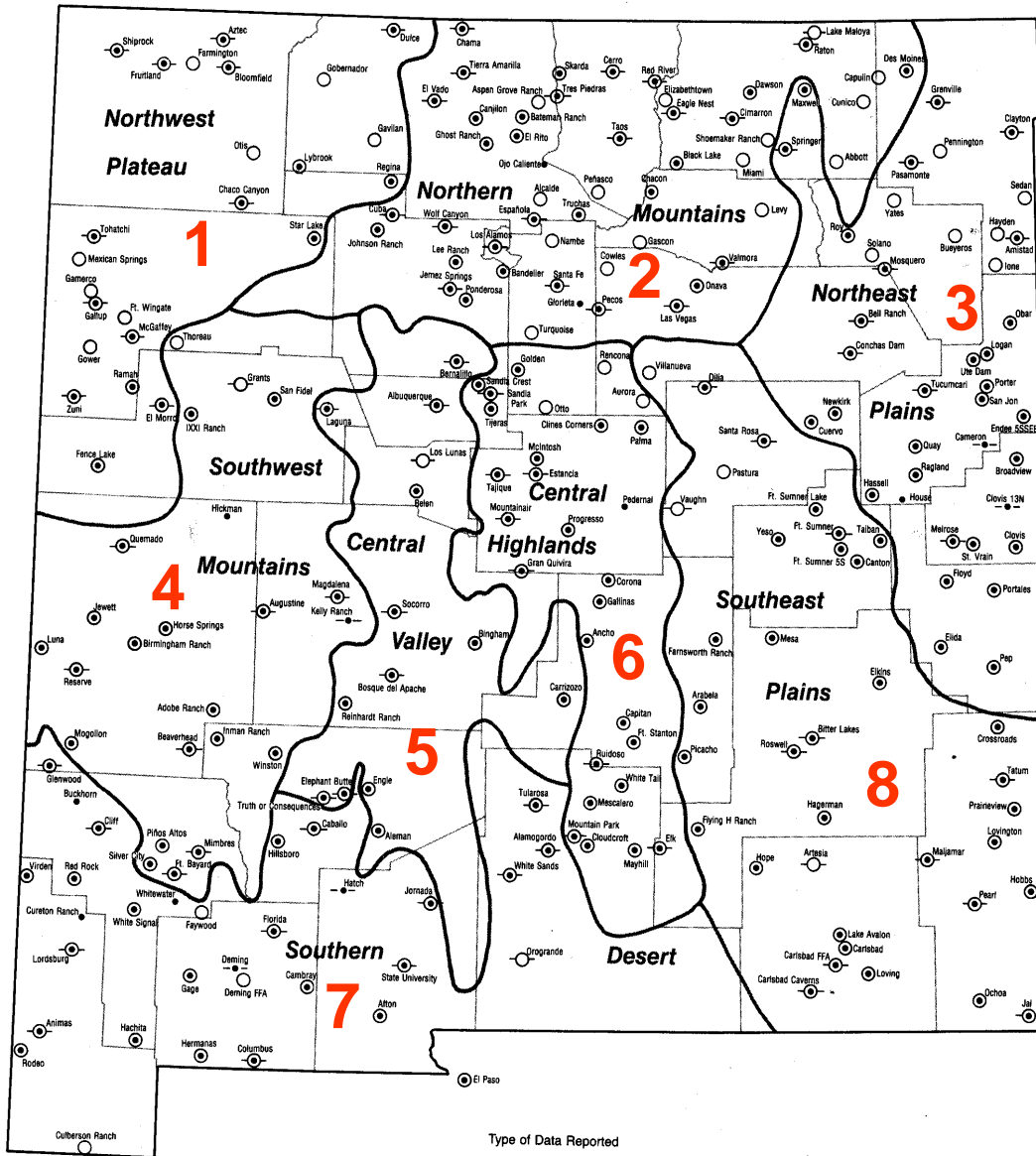
Climate change scenarios for:

- \* CD5: Central Valley
- \* Temperature & Precip. for three averaging periods:

- \* DJF: winter months
- \* JJA: summer months
- \* WY: annual average based on the Oct-Sep water year

are based on:

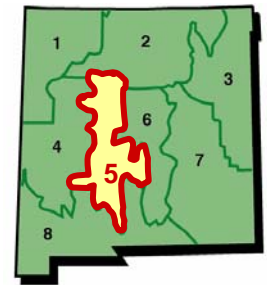
- \* Monthly Climate Division observed data for the period 1901-2007
- \* Linear climate trend for 2008-2100 from an average of 18 IPCC AR4 global climate models, forced by the 'A1B' scenario of greenhouse gas increases



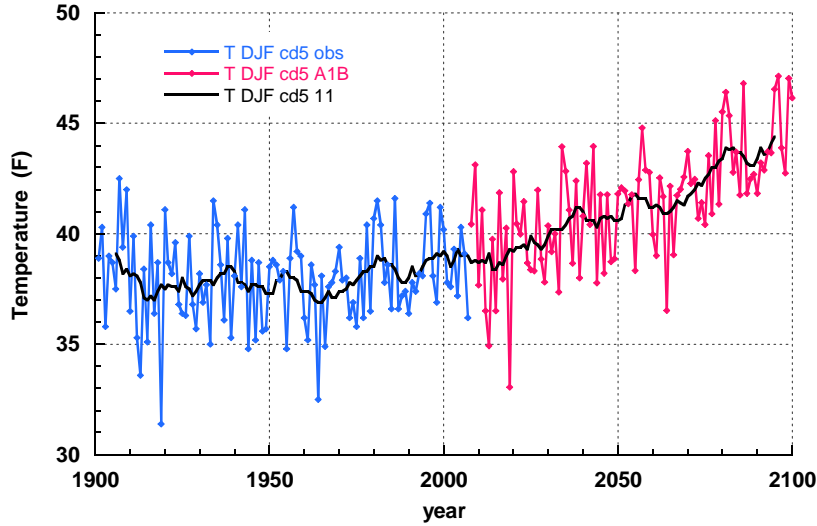
Type of Data Reported

- Precipitation only
- Precipitation and Temperature
- Snowfall only
- ⊗ Snowfall and Precipitation
- Snowfall and Temperature
- ⊗- Snowfall, Precipitation, and Temperature

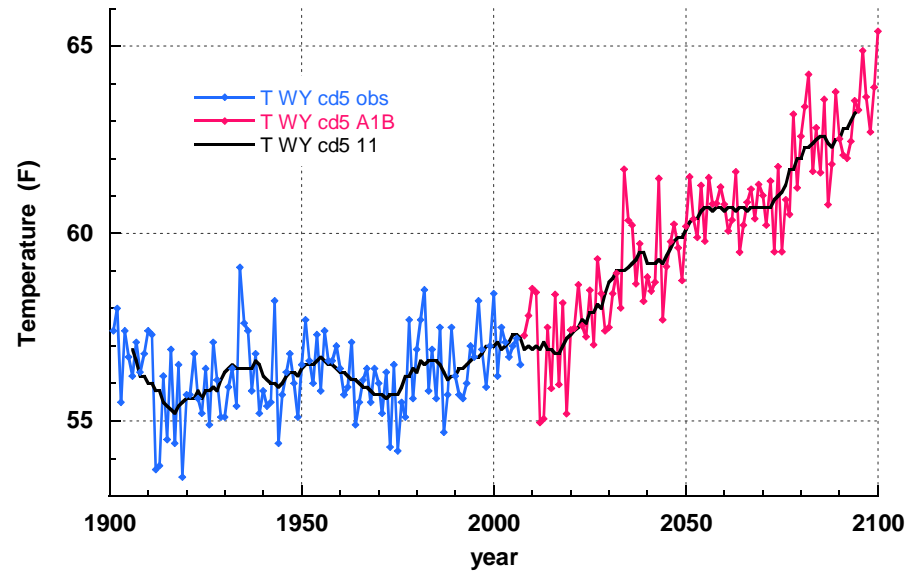
# Temperature, NM CD5



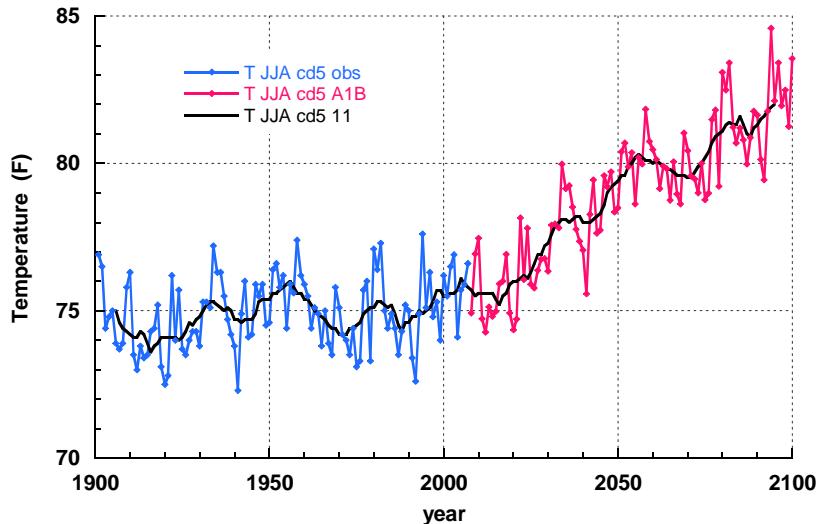
NM Temperature  
DJF CD5



NM Temperature  
Annual (WY) CD5

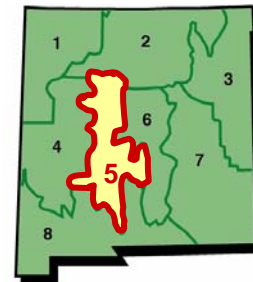


NM Temperature  
JJA CD5

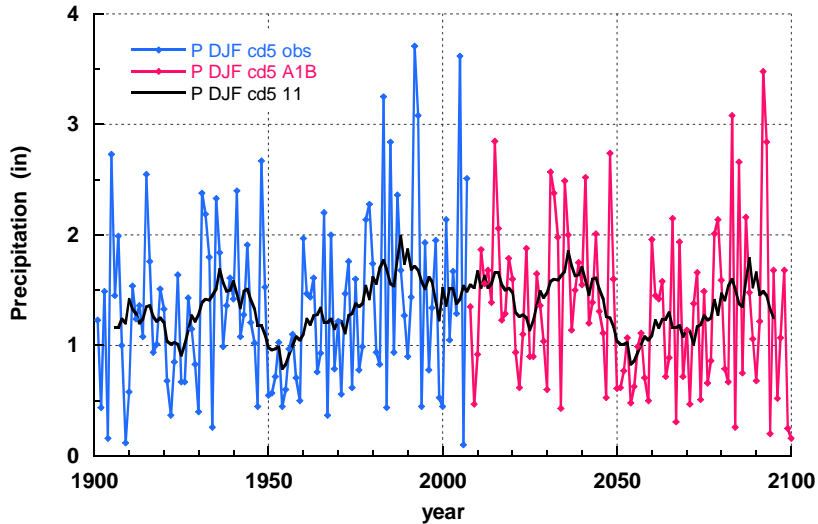


- 1901-2007 observed values**
- 2008-2100 values calculated from the trend of the A1B ensemble scenario, with observed 20th Century interannual variability superimposed**
- 11-yr running average**

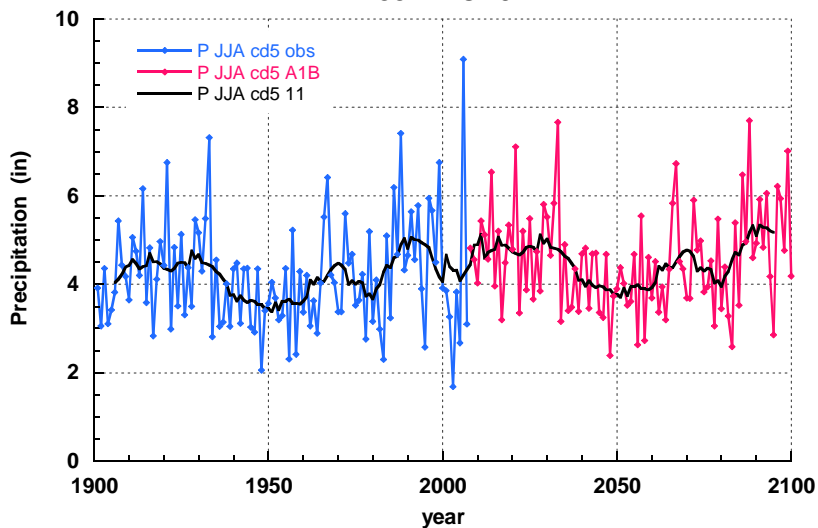
# Precipitation, NM CD5



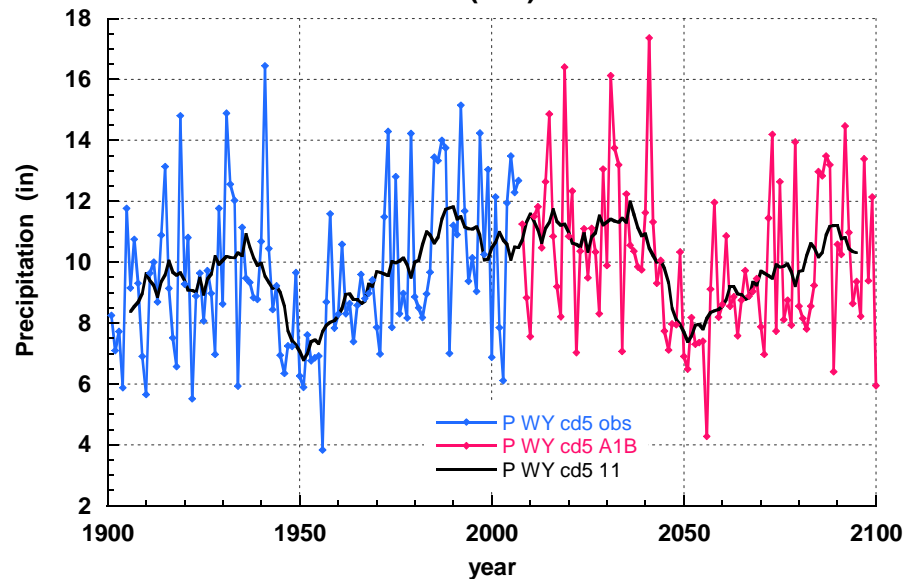
NM Precipitation  
DJF CD5



NM Precipitation  
JJA CD5



NM Precipitation  
Annual (WY) CD5



- 1901-2007 observed values**
- 2008-2100 values calculated from the trend of the A1B ensemble scenario, with observed 20th Century interannual variability superimposed**
- 11-yr running average**