

THE BOARD OF COUNTY COMMISSIONERS OF  
SANTA FE COUNTY

RESOLUTION NO. 2016-26

---

**A RESOLUTION IDENTIFYING AN AREA TO BE REFERRED TO AS THE  
GREATER SANTA FE FIRESHED, RECOGNIZING THE GREATER SANTA FE  
FIRESHED AS BEING IN NEED OF APPLICATION OF FIRE RISK REDUCTION  
TECHNIQUES, AND DIRECTING FIRE DEPARTMENT STAFF TO IDENTIFY  
POTENTIAL FUNDING SOURCES NECESSARY TO PURSUE FIRE RISK  
REDUCTION PROJECTS IN THE GREATER SANTA FE FIRESHED**

---

**WHEREAS**, Santa Fe County receives up to ten percent of its drinking water from a forested watershed that is dominated by vegetation both adapted to wildfire and also at risk from high intensity wildfire; and

**WHEREAS**, the health and safety of the citizens of Santa Fe County are dependent on healthy forests and watersheds for a sustainable source of drinking water; and

**WHEREAS**, the economy of Santa Fe County is connected to the natural amenities in and around Santa Fe County which are primarily on public lands managed by the Santa Fe National Forest, and are dominated by vegetation that is adapted to wildfire, but is also at risk from high-intensity wildfire; and

**WHEREAS**, the economy of the Santa Fe area is dependent on scenic vistas, access to nearby forested trails and streams, access to Hyde Memorial State Park, picnic areas and scenic overlooks, and access to a successful downhill ski area; and

**WHEREAS**, the aforementioned elements of the Santa Fe economy are at high risk when there are high-intensity wildfires and subsequent floods and debris flows; and

**WHEREAS**, the area designated on Exhibit A, attached hereto and made a part hereof by reference, shall be referred to as the Greater Santa Fe Fireshed;

**WHEREAS**, the Greater Santa Fe Fireshed lies within and affects City, County, State, Tribal, and Federal jurisdictions; and

**WHEREAS**, Santa Fe County adopted resolution 2010-110, endorsing wilderness designation for the inventoried Roadless Areas which are adjacent to the Pecos Wilderness; and

**WHEREAS**, designated wilderness areas require special consideration and evaluation regarding active management and wildfire response; and

COUNTY OF SANTA FE )  
STATE OF NEW MEXICO ) ss

BCC RESOLUTIONS  
PAGES: 4

I Hereby Certify That This Instrument Was Filed for  
Record On The 24TH Day Of February, 2016 at 10:38:02 AM  
and Was Duly Recorded as Instrument # 1787140  
of The Records Of Santa Fe County

Witness My Hand And Seal Of Office  
Geraldine Salazar

Deputy Laura Hernandez County Clerk, Santa Fe, NM



SFC CLERK RECORDED 02/24/2016

WHEREAS, coordination, collaboration, and cooperation among public, private, and non-profit groups has been shown to gain greater public support than the independent efforts of various organizations and entities; and

WHEREAS, protection of the Greater Santa Fe Watershed is essential to preserving our unique environment, our quality of life, and the economic vitality of Santa Fe County; and

WHEREAS, Santa Fe County has adopted the Sustainable Growth Management Plan, and Goal 9.6 of the SGMP supports coordination and collaboration to limit threats from wildfire in the Fireshed.

NOW THEREFORE, BE IT RESOLVED, that the Board of County Commissioners of Santa Fe County establish that the area depicted on Exhibit A shall be referred to as the Greater Santa Fe Fireshed, and recognizes the Greater Santa Fe Fireshed as an area in need of application of fire risk reduction techniques, such as thinning and prescribed managed fire.

BE IT FURTHER RESOLVED that Santa Fe Fire Department Staff is directed to seek out and identify potential funding sources necessary to pursue fire risk reduction projects in the Greater Santa Fe Fireshed.

PASSED, APPROVED, AND ADOPTED THIS 23<sup>rd</sup> day of February 2016.

BOARD OF COUNTY COMMISSIONERS  
OF SANTA FE COUNTY

By: Miguel M. Chavez  
Miguel M. Chavez, Chair

Date: 2/23/16



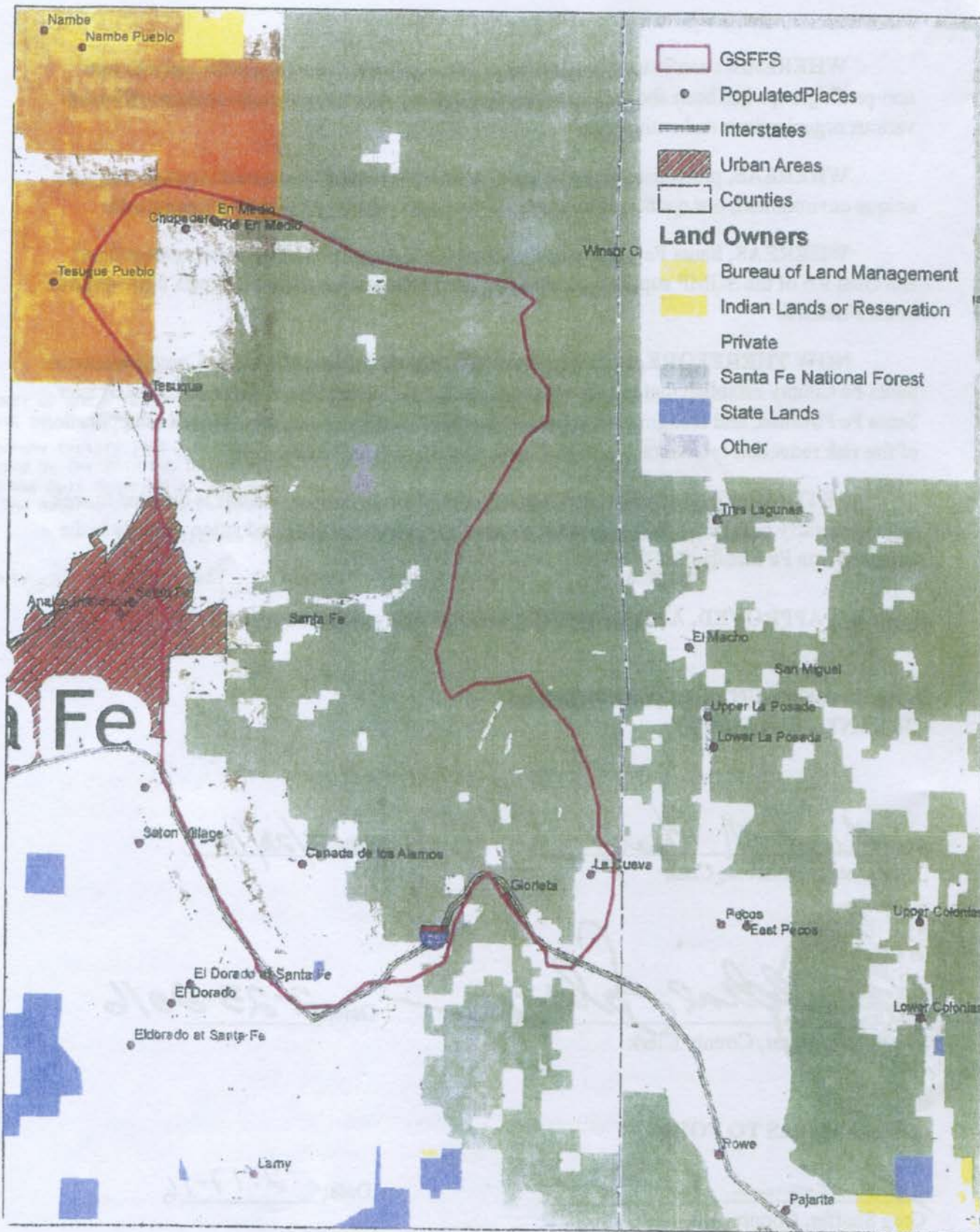
Geraldine Salazar  
Geraldine Salazar, County Clerk

Date: 2-23-2016

APPROVED AS TO FORM:

Greg Shaffer  
Greg Shaffer, County Attorney

Date: 2-17-16



Fire Adapted Communities:  
Greater Santa Fe Fire Shed, 2015

0 5 10 Miles

N